



In This Issue:

- > 2 Decks In 2 Days | Offshore Deck Offloads
- > The Shipyard | OSU Research Vessel Load Out
- > Spotlight On Safety | Work Site Safety

BERARD
SINCE
1945

The Mega Transport Experts

2 Decks In 2 Days Offshore Deck Offloads



Job Specs

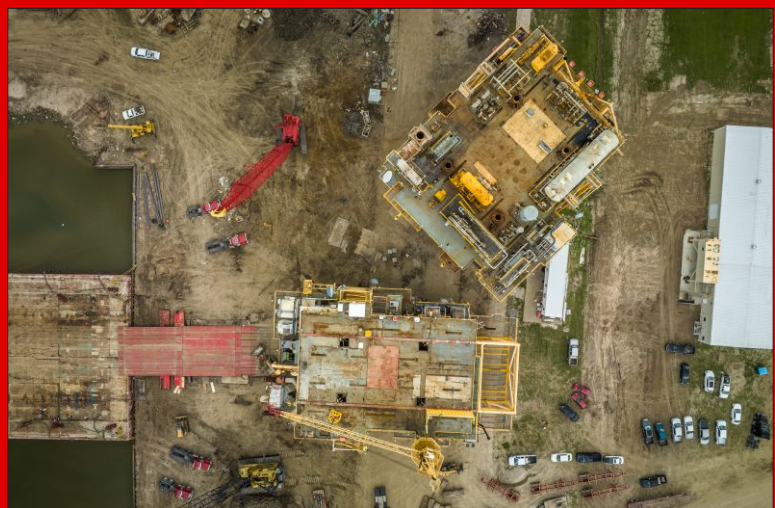
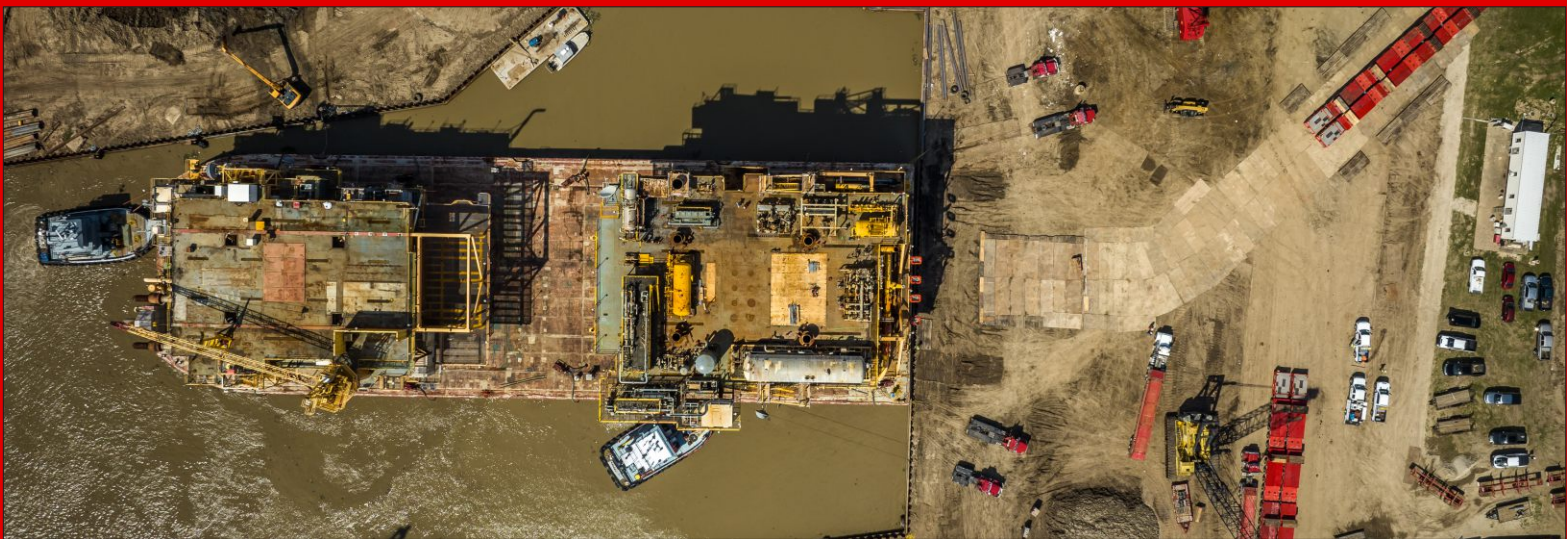
Weight:
2,135 & 2,375 Tons

Dimensions:
177'L x 112'W
155'L x 123'W

Equipment Used:
88 axle lines of SPMTs,
barge ramps, laminated
mats, steel plates, beams
and winch trucks

When offshore production platforms need to be decommissioned, the Berard team is there to serve fabrication and recycling companies with offloading and transport services. Our team has the skill set and the equipment to make moving these colossal structures just another day at the office. The team was recently commissioned to offload two topside decks weighing 2,135 and 2,375 tons each. Berard engineers and project managers developed a plan using a combination of steel beams, crane mats, laminated mats, steel plating and a ramp configuration that helped make the offload issue free. The team accomplished the offloading of both decks in only two days, a timely delivery even with all of the extra prep work involved. Our team did a phenomenal job and we appreciate everyone's dedication to getting the job done safely.





The Shipyard OSU Research Vessel Load Out



Job Specs

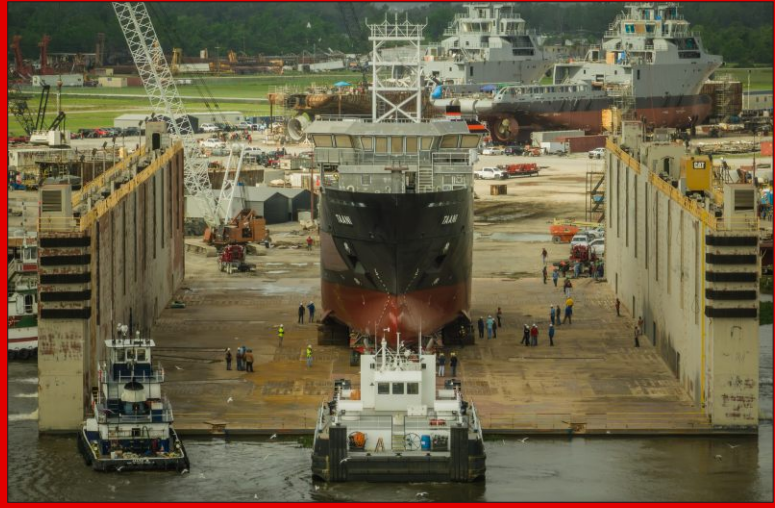
Weight:
1,139 Tons

Dimensions:
199'L x 41'W

Equipment Used:
48 axle lines of SPMTs, 2
spacers, ramps and winch
trucks

The Berard team recently loaded out the first of three oceanographic research vessels dedicated to advancing marine science along U.S. coasts. The 199'x 41' Taani is being built as part of a project led by Oregon State University and funded by the U.S. National Science Foundation to provide scientists with valuable new tools to study critical issues such as rapidly changing ocean conditions. The team used 48 axle lines of SPMTs to lift the 1,139 ton vessel and transport it to the client's dry dock. Once at the bulkhead, Berard worked closely with the shipyard's dry dock team to coordinate the smooth and timely transfer of the vessel from land to dry dock. Now on the dry dock, the team maneuvered the vessel and lowered it onto pre-positioned supports. The SPMTs were then removed and the Taani was later floated off and readied for further outfitting by the shipyard. Berard was proud to be chosen to transport this amazing research ship.





Work Site Safety



CAUTION

Every job site comes with risks. From the moment our team arrives on site, our team members do our best to minimize the risk of injury by implementing a strong job site safety plan. With several pieces of equipment moving around simultaneously, good communication is key to keeping everyone out of harms way.

Berard team members work closely with our clients team to ensure everyone's on the same page, thus making sure each and every team member has a safe day and goes home to their families.

> **Always wear personal protective equipment (PPE).**

PPE is essential on construction sites. Everyone on your team must wear a hardhat, high viz vest, glasses, and gloves whenever necessary.

> **Limit crowd sizes in work areas.**

Crowds are pretty common on construction sites with large teams. But they can also increase the risk of injury if not managed properly.

> **Keep work areas clear.**

You also want to ensure that you're keeping your work areas as clean and clear as possible.

> **Keep a communication device on hand.**

If someone on your job sites does experience an injury, you want to make sure to contact help as quickly as possible.

> Birthdays @ Berard

Happy Birthday!

Happy Birthday to These Dedicated Team Members!

Connor Angelle
George Broussard
Lara Bumgarner
Roy Courville
† Rogers Courville